

2668.2. Halteeinsatz für Schnellwechsel-Schneidstempel, leichte Ausführung
 2668.3. Halteeinsatz für Schnellwechsel-Schneidstempel, schwere Ausführung

Anwendungsbeispiel:

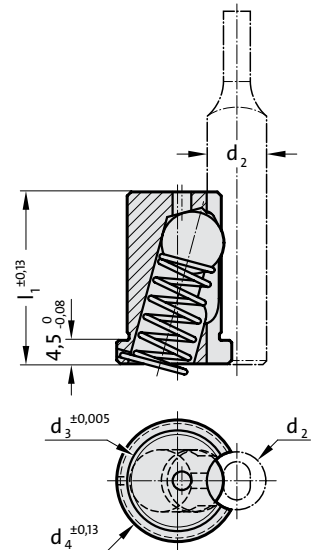


2668.2.

Bestell-Nr.	Schneidstempel- ϕ			
	d_2	d_3	d_4	l_1
2668.2.06	6	12	14,6	25,7
2668.2.10	10	14	16,6	25,7
2668.2.13	13	14	16,6	25,7
2668.2.16	16	14	16,6	25,7
2668.2.20	20	16	18,6	25,7
2668.2.25	25	16	18,6	25,7
2668.2.32	32	16	18,6	25,7
2668.2.38	38	16	18,6	25,7

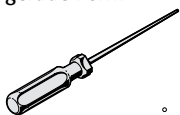
2668.3.

Bestell-Nr.	Schneidstempel- ϕ			
	d_2	d_3	d_4	l_1
2668.3.10	10	16	19,6	34,7
2668.3.13	13	20	24,6	34,7
2668.3.16	16	20	24,6	34,7
2668.3.20	20	20	24,6	34,7
2668.3.25	25	20	24,6	34,7
2668.3.32	32	20	24,6	34,7
2668.3.40	40	20	24,6	34,7

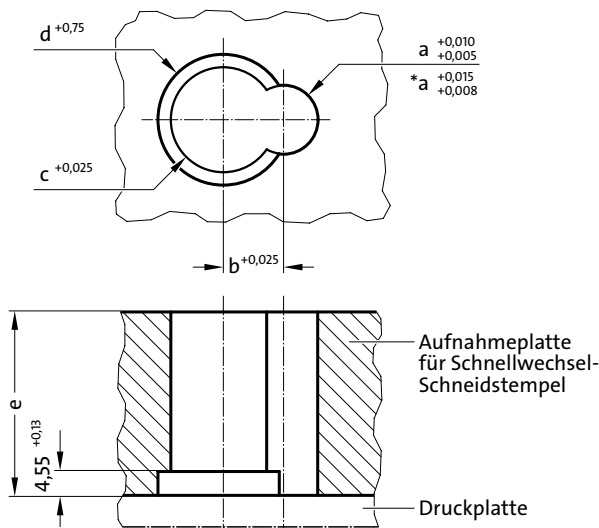


2666.05.02

Kugelauslösewerkzeug, gerade Form



Einbaubeispiel:



Einbaumaße für 2668.2. / 2668.3.

Bestell-Nr.	a	b	c	d	e
2668.2.06	6	6,5	12,013	15,0	25,7
2668.2.10	10	9,0	14,013	17,0	25,7
2668.2.13	13	10,5	14,013	17,0	25,7
2668.2.16	16	12,0	14,013	17,0	25,7
2668.2.20	20	14,0	16,013	19,0	25,7
2668.2.25	25	16,5	16,013	19,0	25,7
2668.2.32	*32	20,0	16,013	19,0	25,7
2668.2.38	*38	23,0	16,013	19,0	25,7
2668.3.10	10	10,0	16,013	20,0	34,7
2668.3.13	13	11,5	20,013	25,0	34,7
2668.3.16	16	13,0	20,013	25,0	34,7
2668.3.20	20	15,0	20,013	25,0	34,7
2668.3.25	25	17,5	20,013	25,0	34,7
2668.3.32	*32	21,0	20,013	25,0	34,7
2668.3.40	*40	25,0	20,013	25,0	34,7

Application example:

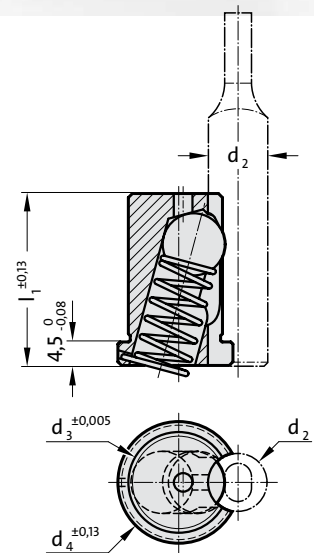


2668.2.

Order No	Punch ϕ d_2	d_3	d_4	l_1
2668.2.06	6	12	14,6	25,7
2668.2.10	10	14	16,6	25,7
2668.2.13	13	14	16,6	25,7
2668.2.16	16	14	16,6	25,7
2668.2.20	20	16	18,6	25,7
2668.2.25	25	16	18,6	25,7
2668.2.32	32	16	18,6	25,7
2668.2.38	38	16	18,6	25,7

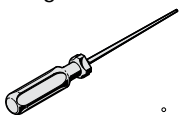
2668.3.

Order No	Punch ϕ d_2	d_3	d_4	l_1
2668.3.10	10	16	19,6	34,7
2668.3.13	13	20	24,6	34,7
2668.3.16	16	20	24,6	34,7
2668.3.20	20	20	24,6	34,7
2668.3.25	25	20	24,6	34,7
2668.3.32	32	20	24,6	34,7
2668.3.40	40	20	24,6	34,7

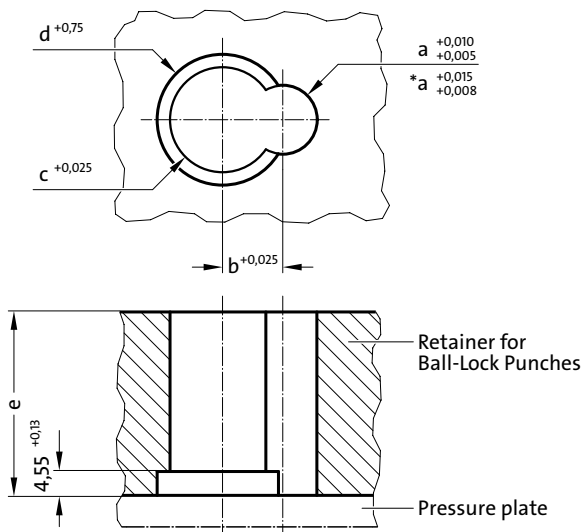


2666.05.02

Ball release tool,
straight



Mounting example:



Build-in dimensions for 2668.2. / 2668.3.

Order No	a	b	c	d	e
2668.2.06	6	6,5	12,013	15,0	25,7
2668.2.10	10	9,0	14,013	17,0	25,7
2668.2.13	13	10,5	14,013	17,0	25,7
2668.2.16	16	12,0	14,013	17,0	25,7
2668.2.20	20	14,0	16,013	19,0	25,7
2668.2.25	25	16,5	16,013	19,0	25,7
2668.2.32	*32	20,0	16,013	19,0	25,7
2668.2.38	*38	23,0	16,013	19,0	25,7
2668.3.10	10	10,0	16,013	20,0	34,7
2668.3.13	13	11,5	20,013	25,0	34,7
2668.3.16	16	13,0	20,013	25,0	34,7
2668.3.20	20	15,0	20,013	25,0	34,7
2668.3.25	25	17,5	20,013	25,0	34,7
2668.3.32	*32	21,0	20,013	25,0	34,7
2668.3.40	*40	25,0	20,013	25,0	34,7